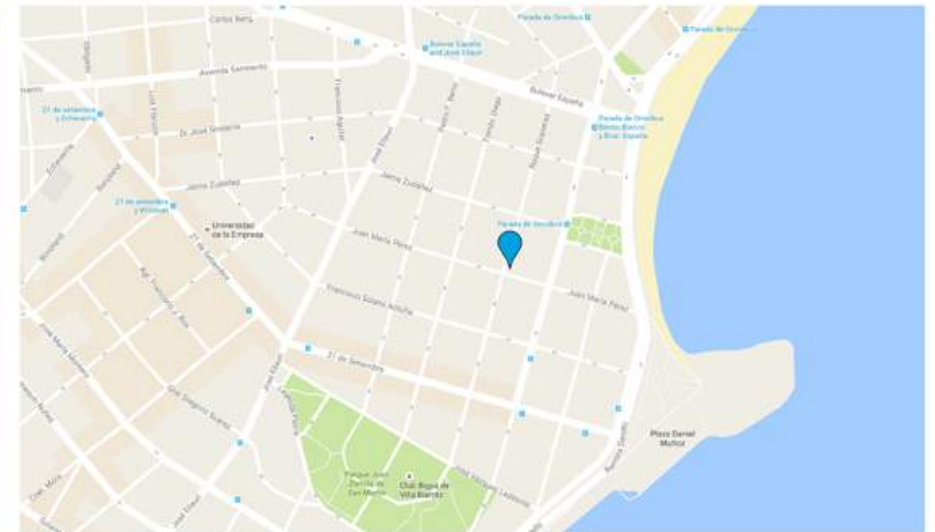
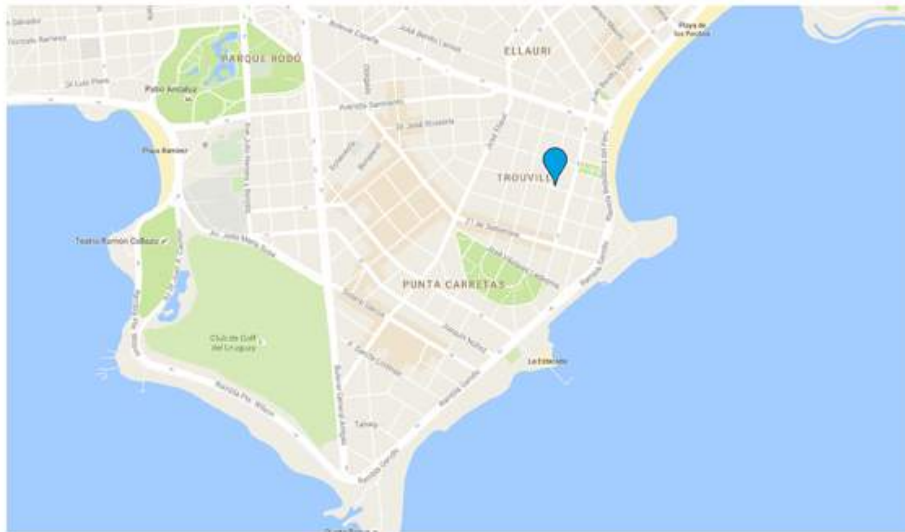
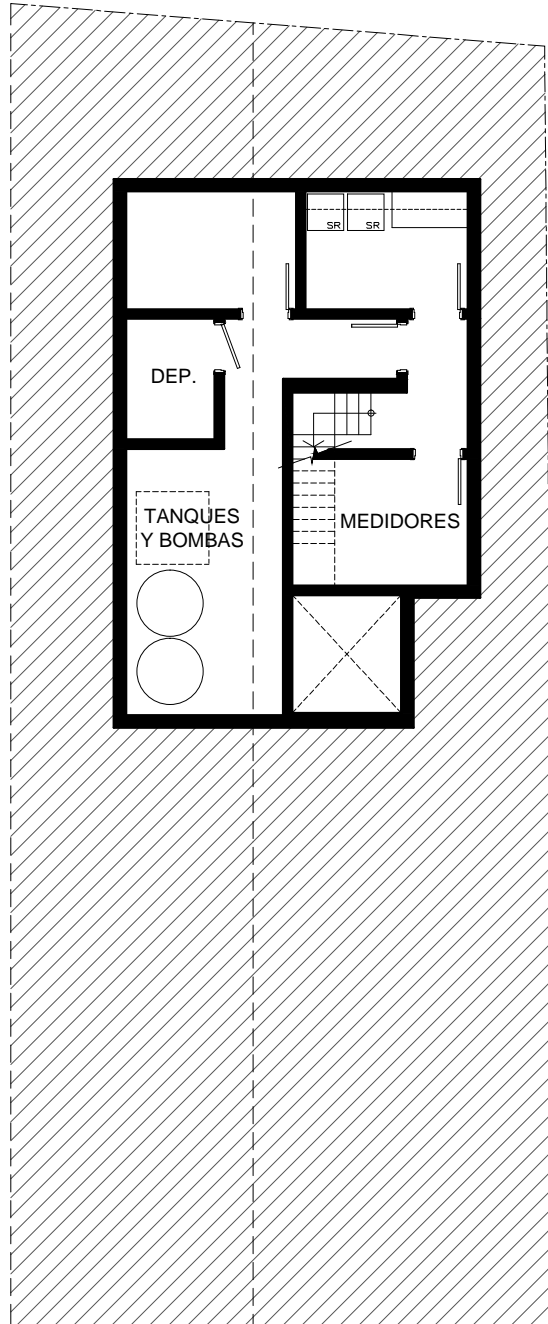


# SOLEIL PLAYA



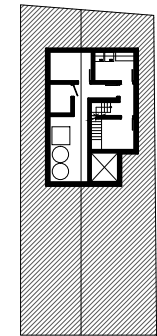
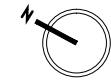
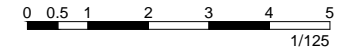


Ubicación - Roque Graseras y Juan María Pérez, Pocitos, Montevideo, Uruguay.  
Cantidad de niveles - 1 Subsuelo, 1 nivel principal de acceso, 9 pisos de viviendas  
Cantidad de unidades - 12 apartamentos de 1 dormitorio y 6 apartamentos de 2 dormitorios.  
Estacionamientos - 9 estacionamientos en Planta Baja.



# SOLEIL PLAYA

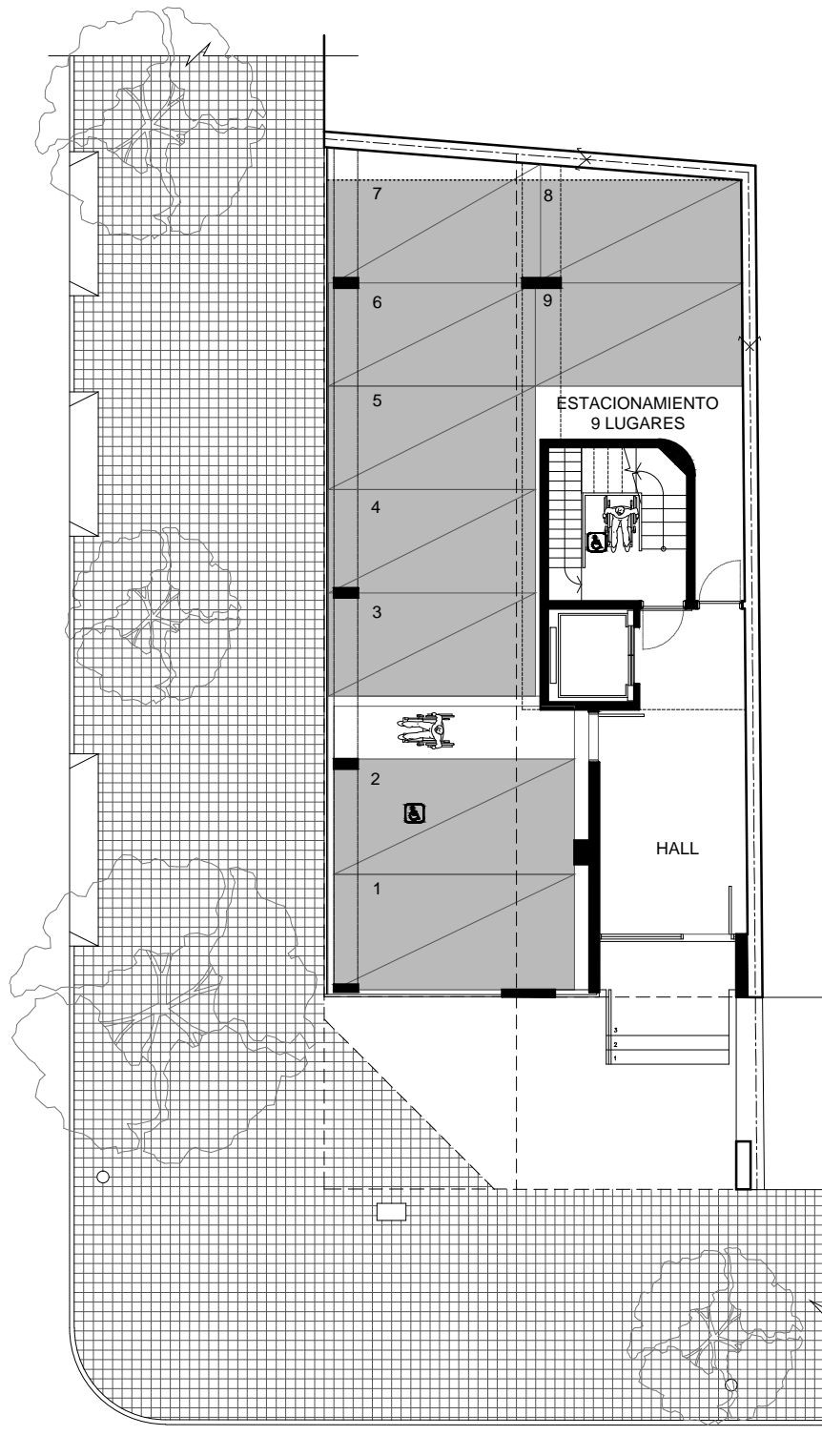
## SUBSUELO



PROYECTO Y DIRECCIÓN:  
**ATIJAS - CASAL ARQUITECTOS**

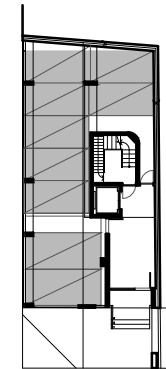
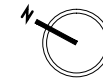
PROMUEVE Y CONSTRUYE:  
**PADMY CORPORATION S.A**





# SOLEIL PLAYA

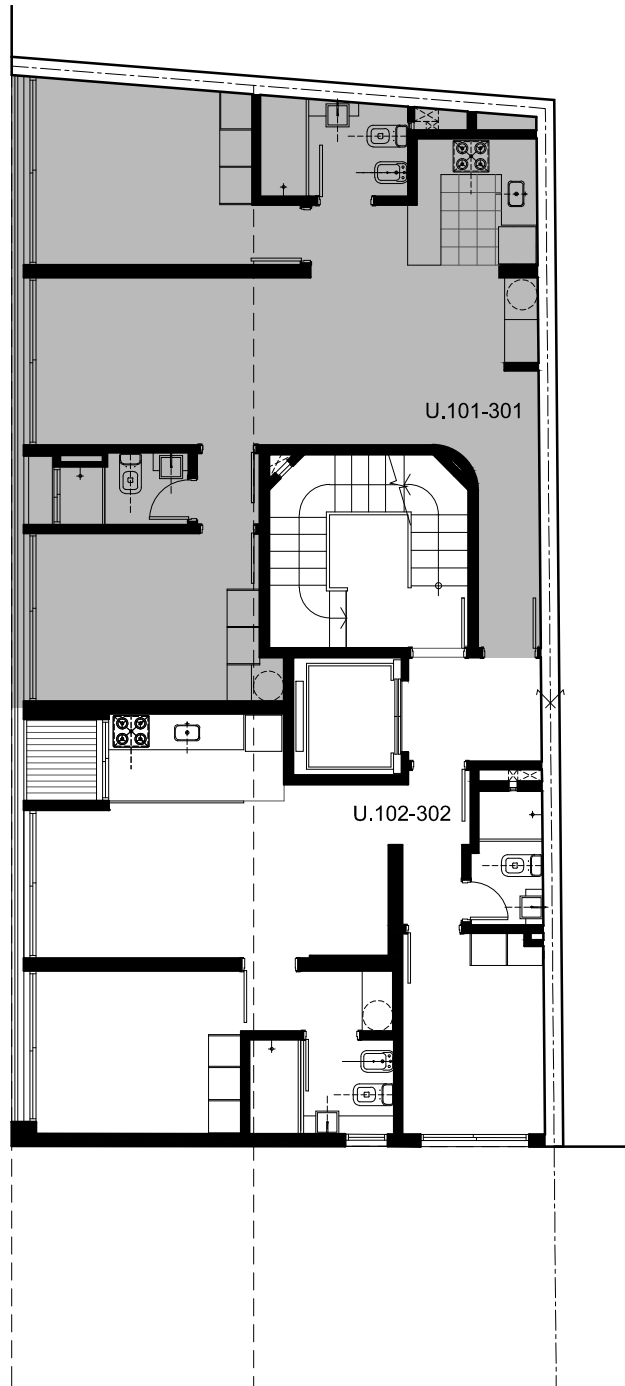
## PLANTA BAJA



PROYECTO Y DIRECCIÓN:  
**ATIJAS - CASAL ARQUITECTOS**

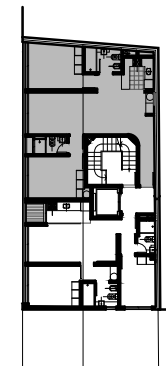
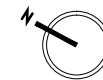
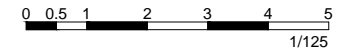
PROMUEVE Y CONSTRUYE:  
**PADMY CORPORATION S.A**





# SOLEIL PLAYA

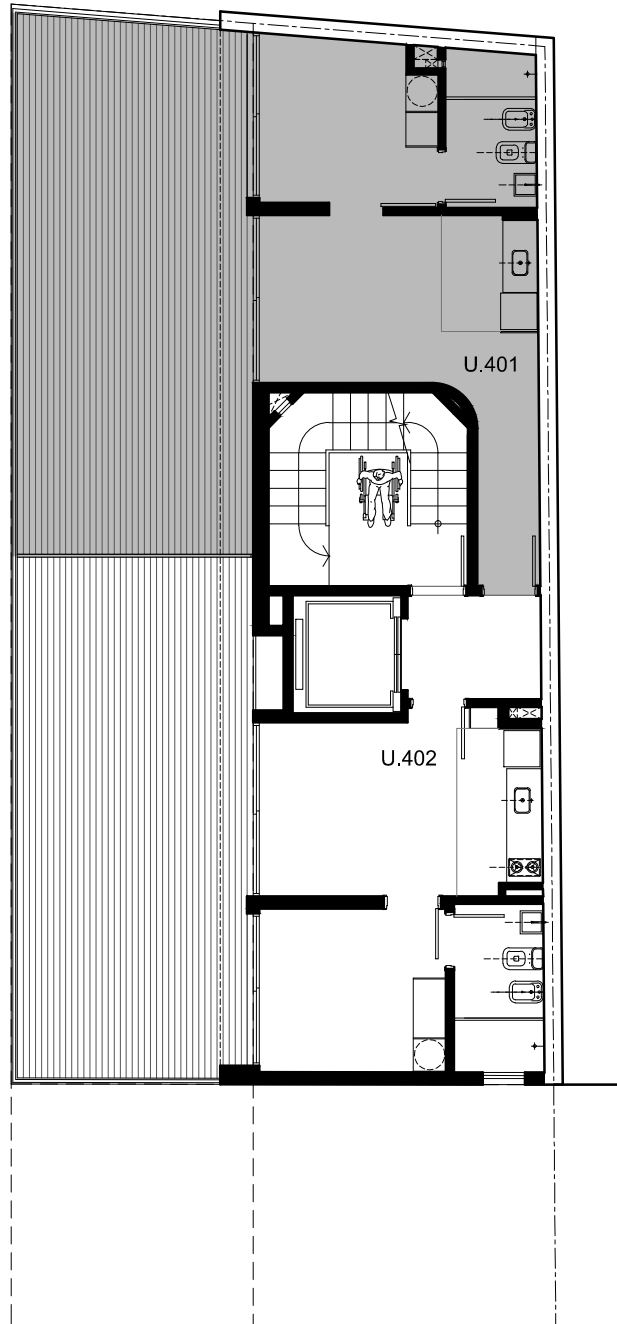
## PISOS 1 al 3



PROYECTO Y DIRECCIÓN:  
**ATIJAS - CASAL ARQUITECTOS**

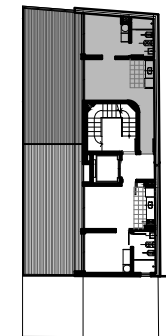
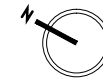
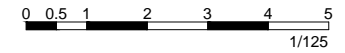
PROMUEVE Y CONSTRUYE:  
**PADMY CORPORATION S.A**





# SOLEIL PLAYA

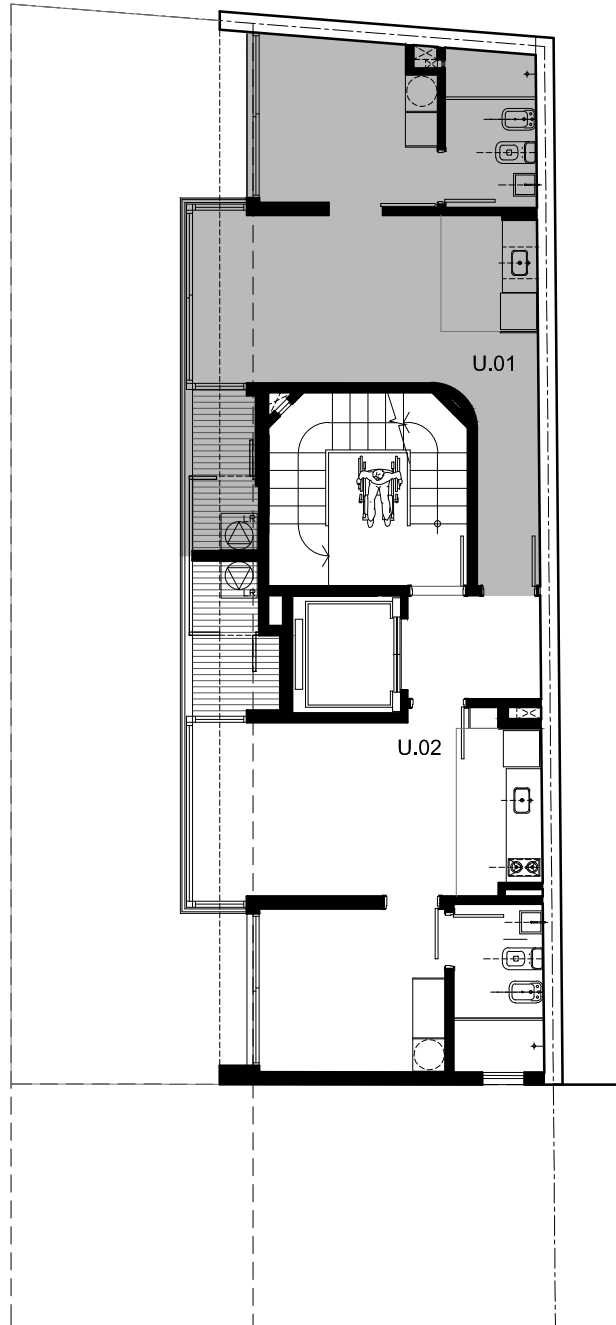
## PISO 4



PROYECTO Y DIRECCIÓN:  
**ATIJAS - CASAL ARQUITECTOS**

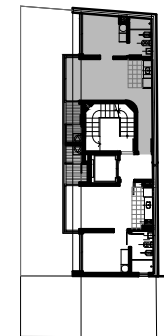
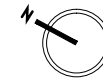
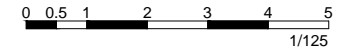
PROMUEVE Y CONSTRUYE:  
**PADMY CORPORATION S.A**





# SOLEIL PLAYA

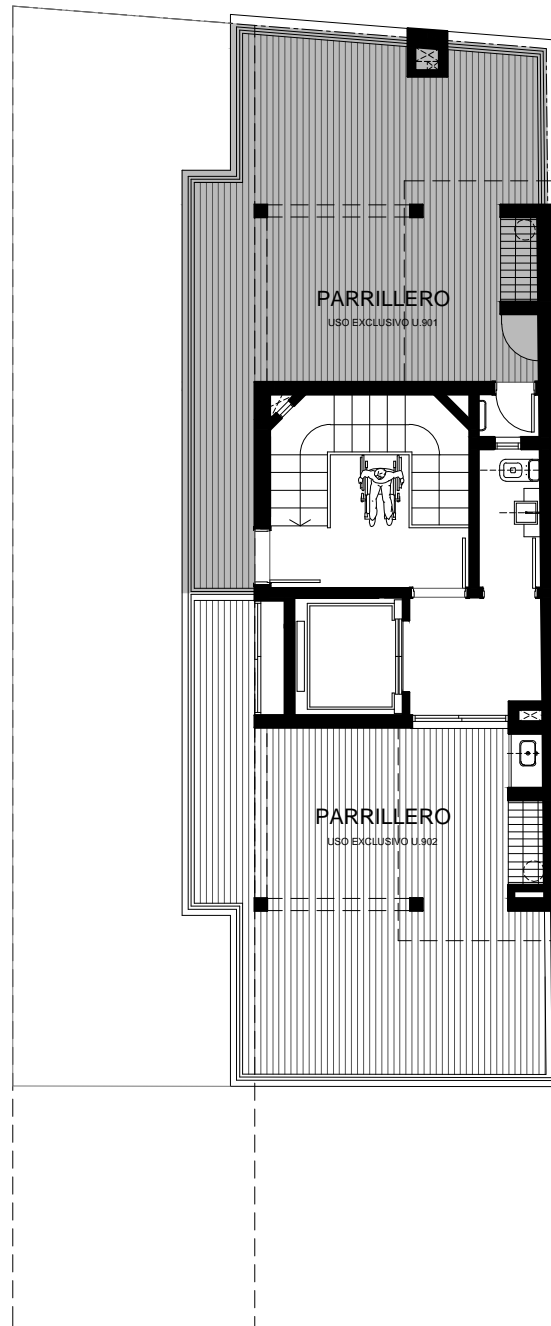
PISOS 5 al 9



PROYECTO Y DIRECCIÓN:  
**ATIJAS - CASAL ARQUITECTOS**

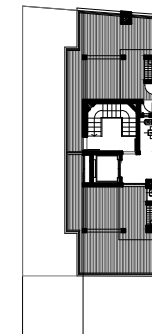
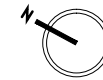
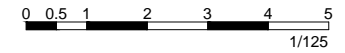
PROMUEVE Y CONSTRUYE:  
**PADMY CORPORATION S.A**





# SOLEIL PLAYA

## PISO 10 - PARRILLEROS



PROYECTO Y DIRECCIÓN:  
**ATIJAS - CASAL ARQUITECTOS**

PROMUEVE Y CONSTRUYE:  
**PADMY CORPORATION S.A**



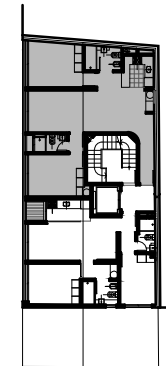
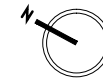


# SOLEIL PLAYA

## UNIDAD 101 al 301 2 DORMITORIOS

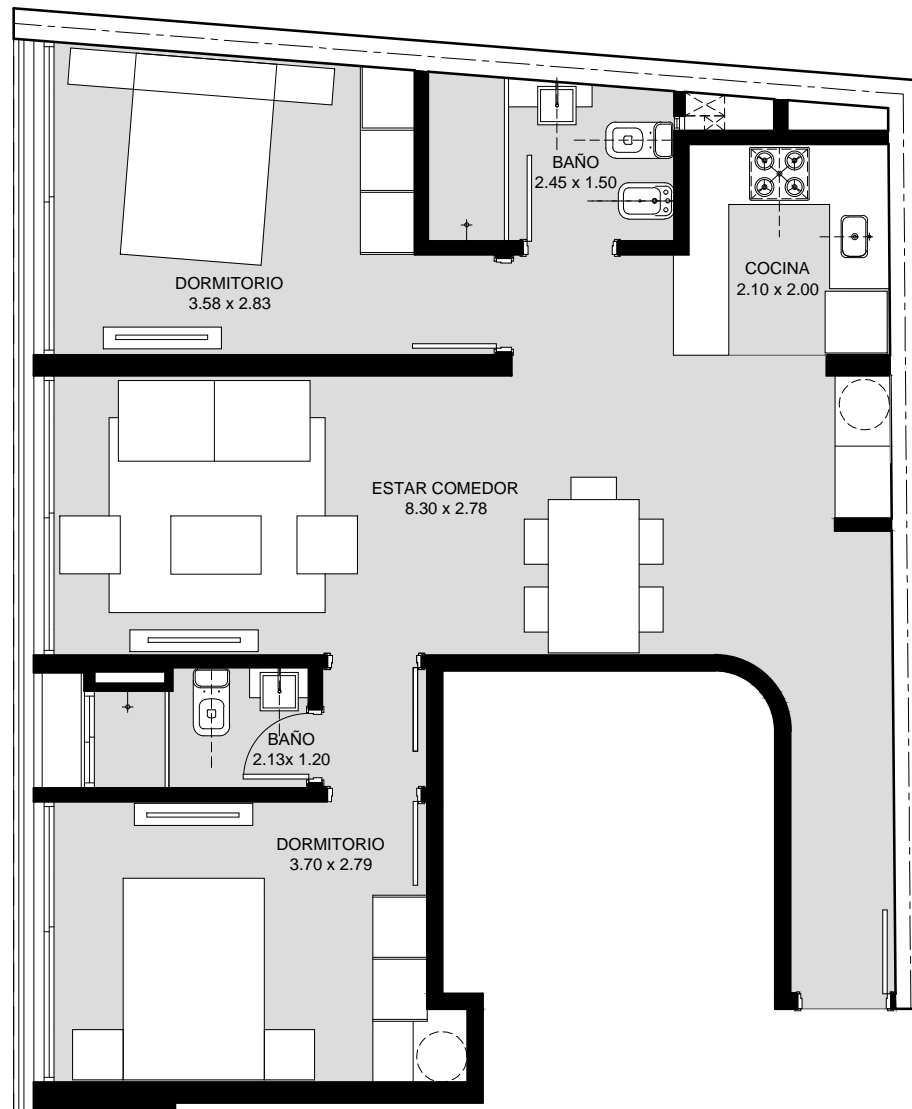
ÁREA HABITABLE + MUROS 76.38 m<sup>2</sup>  
CIRCULACIONES 10.63 m<sup>2</sup>

ÁREA TOTAL 87.01 m<sup>2</sup>



PROYECTO Y DIRECCIÓN:  
**ATIJAS - CASAL ARQUITECTOS**

PROMUEVE Y CONSTRUYE:  
**PADMY CORPORATION S.A**

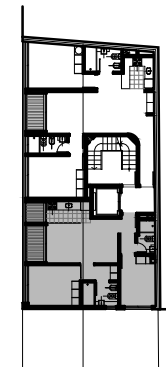
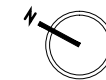


# SOLEIL PLAYA

## UNIDAD 102 al 302 2 DORMITORIOS

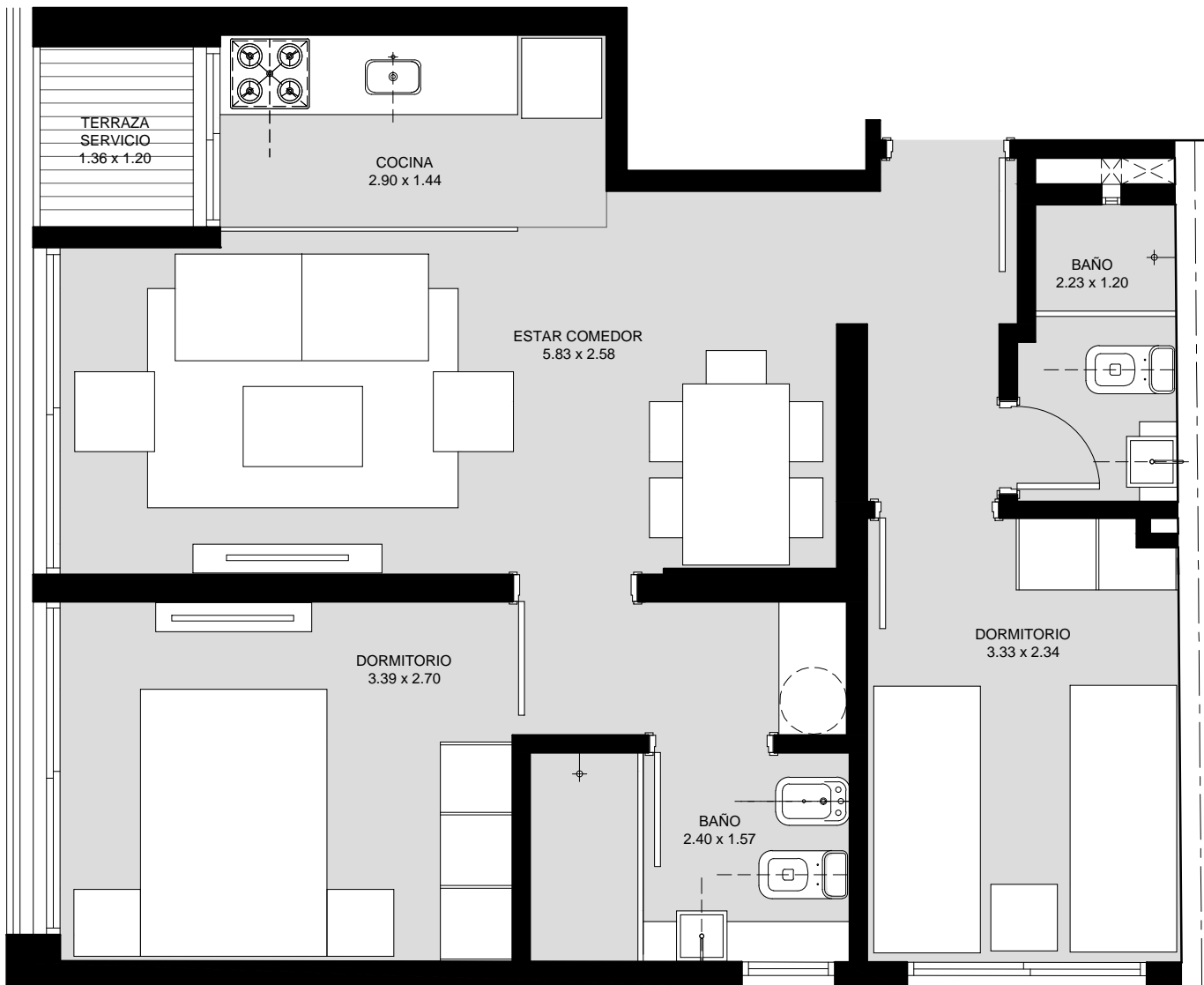
ÁREA HABITABLE + MUROS	58.66 m <sup>2</sup>
TERRAZAS	1.90 m <sup>2</sup>
CIRCULACIONES	8.43 m <sup>2</sup>

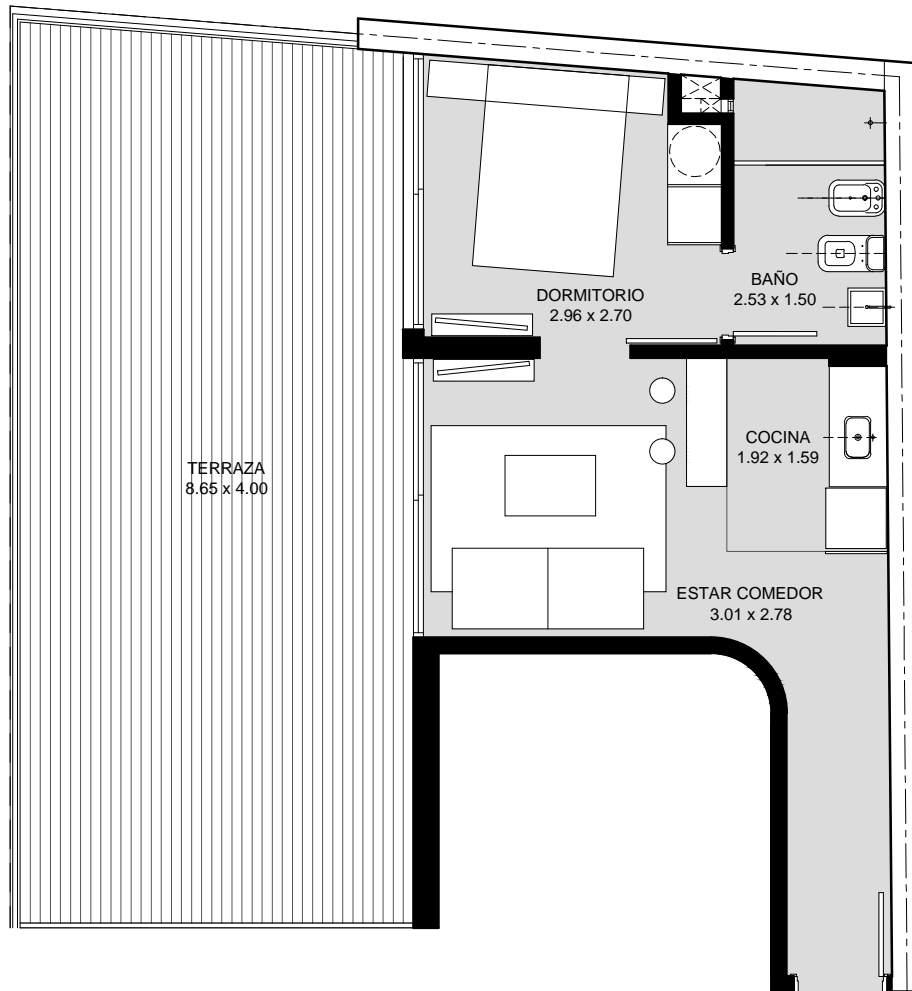
ÁREA TOTAL 68.99 m<sup>2</sup>



PROYECTO Y DIRECCIÓN:  
**ATIJAS - CASAL ARQUITECTOS**

PROMUEVE Y CONSTRUYE:  
**PADMY CORPORATION S.A**



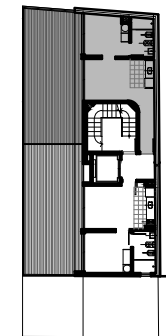
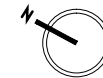


# SOLEIL PLAYA

## UNIDAD 401 1 DORMITORIO

ÁREA HABITABLE + MUROS	34.05 m <sup>2</sup>
TERRAZAS	35.52 m <sup>2</sup>
CIRCULACIONES	9.71 m <sup>2</sup>

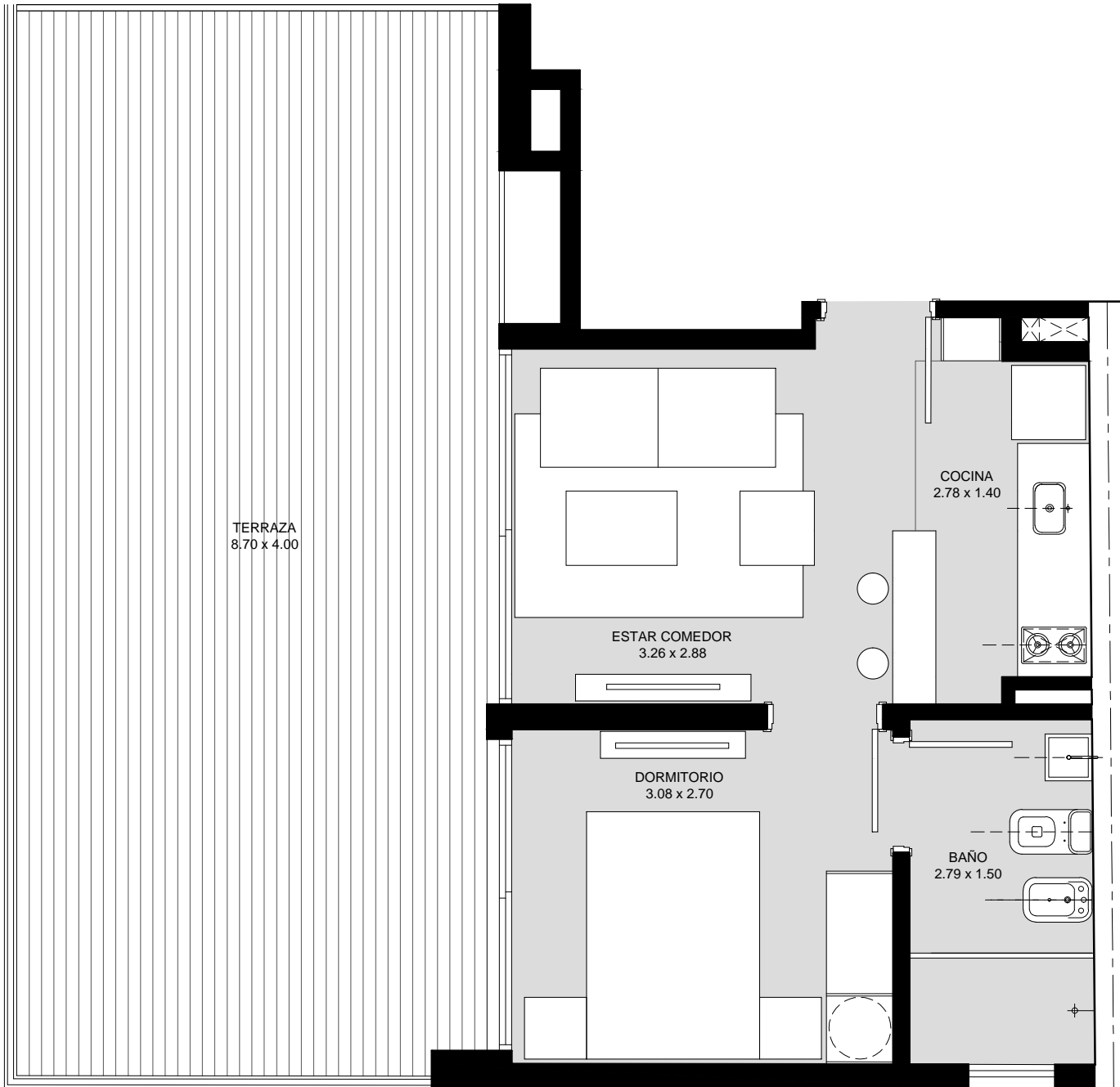
**ÁREA TOTAL 79.28 m<sup>2</sup>**



PROYECTO Y DIRECCIÓN:  
**ATIJAS - CASAL ARQUITECTOS**

PROMUEVE Y CONSTRUYE:  
**PADMY CORPORATION S.A**



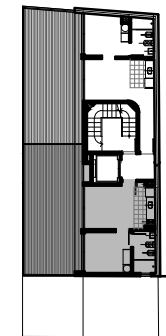
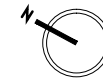


# SOLEIL PLAYA

## UNIDAD 402 1 DORMITORIO

ÁREA HABITABLE + MUROS	32.52 m <sup>2</sup>
TERRAZAS	34.49 m <sup>2</sup>
CIRCULACIONES	9.35 m <sup>2</sup>

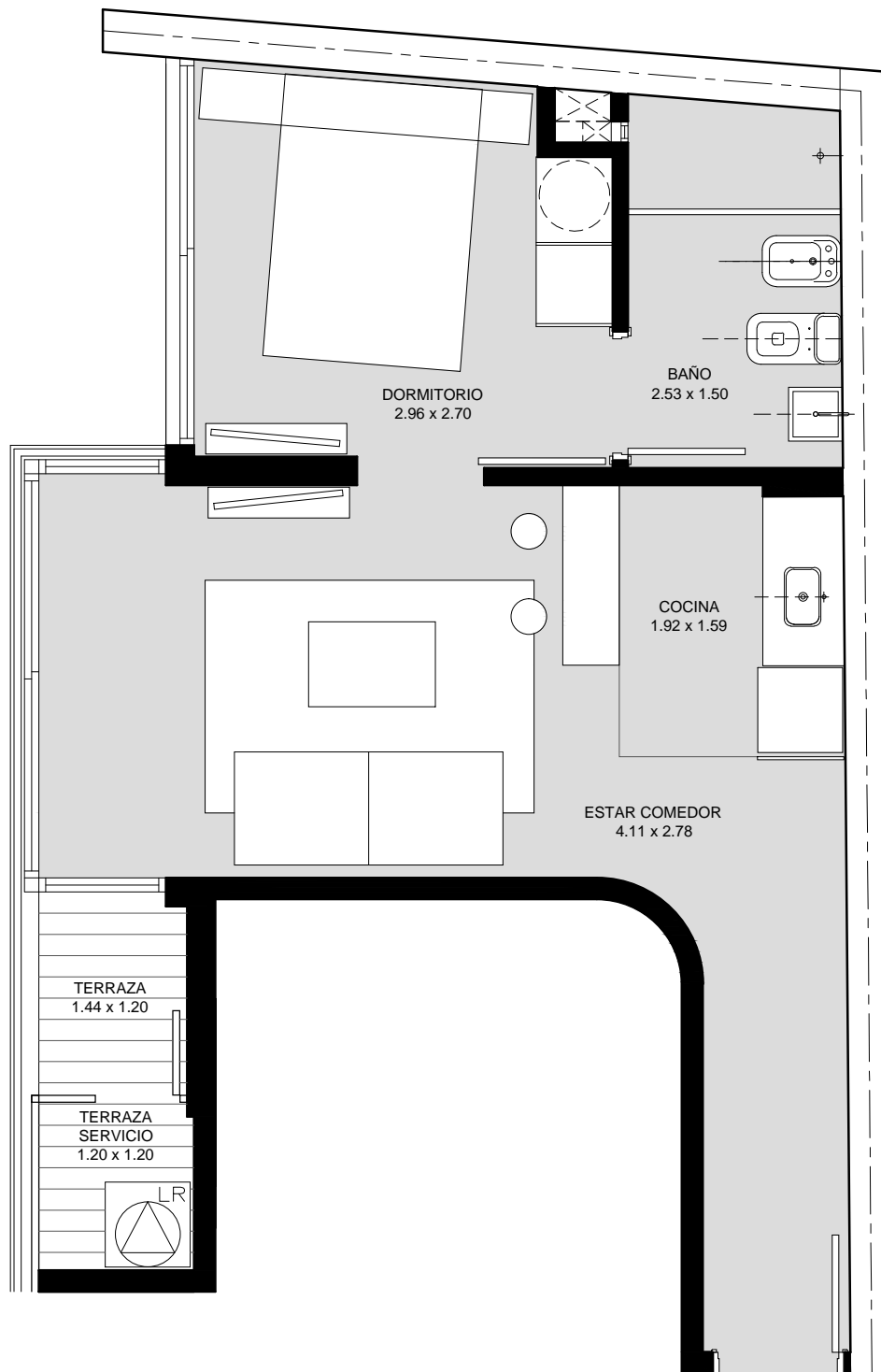
**ÁREA TOTAL 76.36 m<sup>2</sup>**



PROYECTO Y DIRECCIÓN:  
**ATIJAS - CASAL ARQUITECTOS**

PROMUEVE Y CONSTRUYE:  
**PADMY CORPORATION S.A**



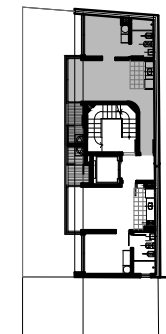
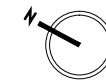


# SOLEIL PLAYA

## UNIDAD 501 al 801 1 DORMITORIO

ÁREA HABITABLE + MUROS	37.16 m <sup>2</sup>
TERRAZAS	3.95 m <sup>2</sup>
CIRCULACIONES	9.71 m <sup>2</sup>

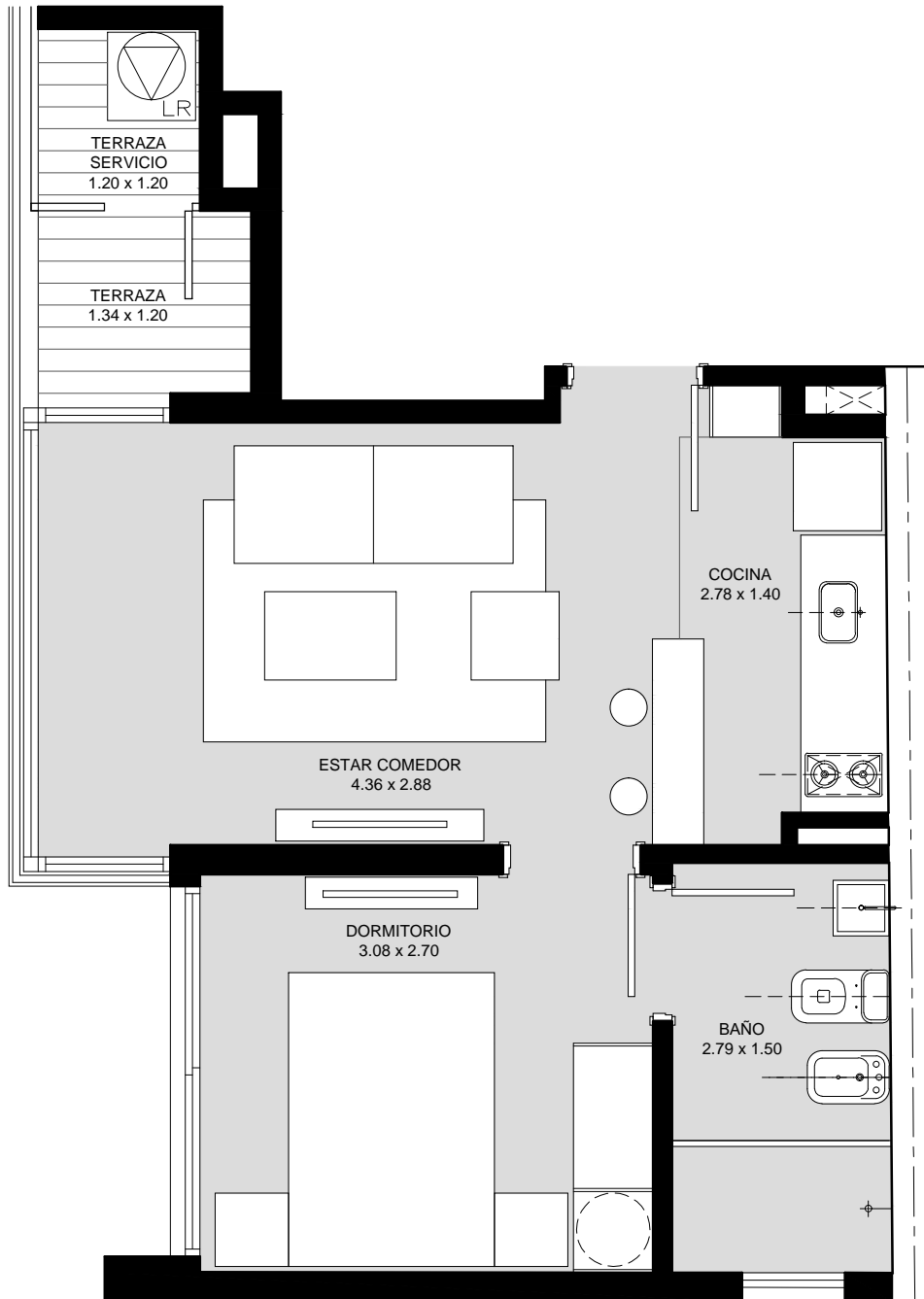
**ÁREA TOTAL 50.82 m<sup>2</sup>**



PROYECTO Y DIRECCIÓN:  
**ATIJAS - CASAL ARQUITECTOS**

PROMUEVE Y CONSTRUYE:  
**PADMY CORPORATION S.A**



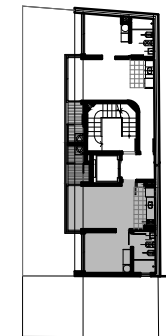
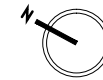


# SOLEIL PLAYA

## UNIDAD 502 al 802 1 DORMITORIO

ÁREA HABITABLE + MUROS	35.04 m <sup>2</sup>
TERRAZAS	4.54 m <sup>2</sup>
CIRCULACIONES	9.35 m <sup>2</sup>

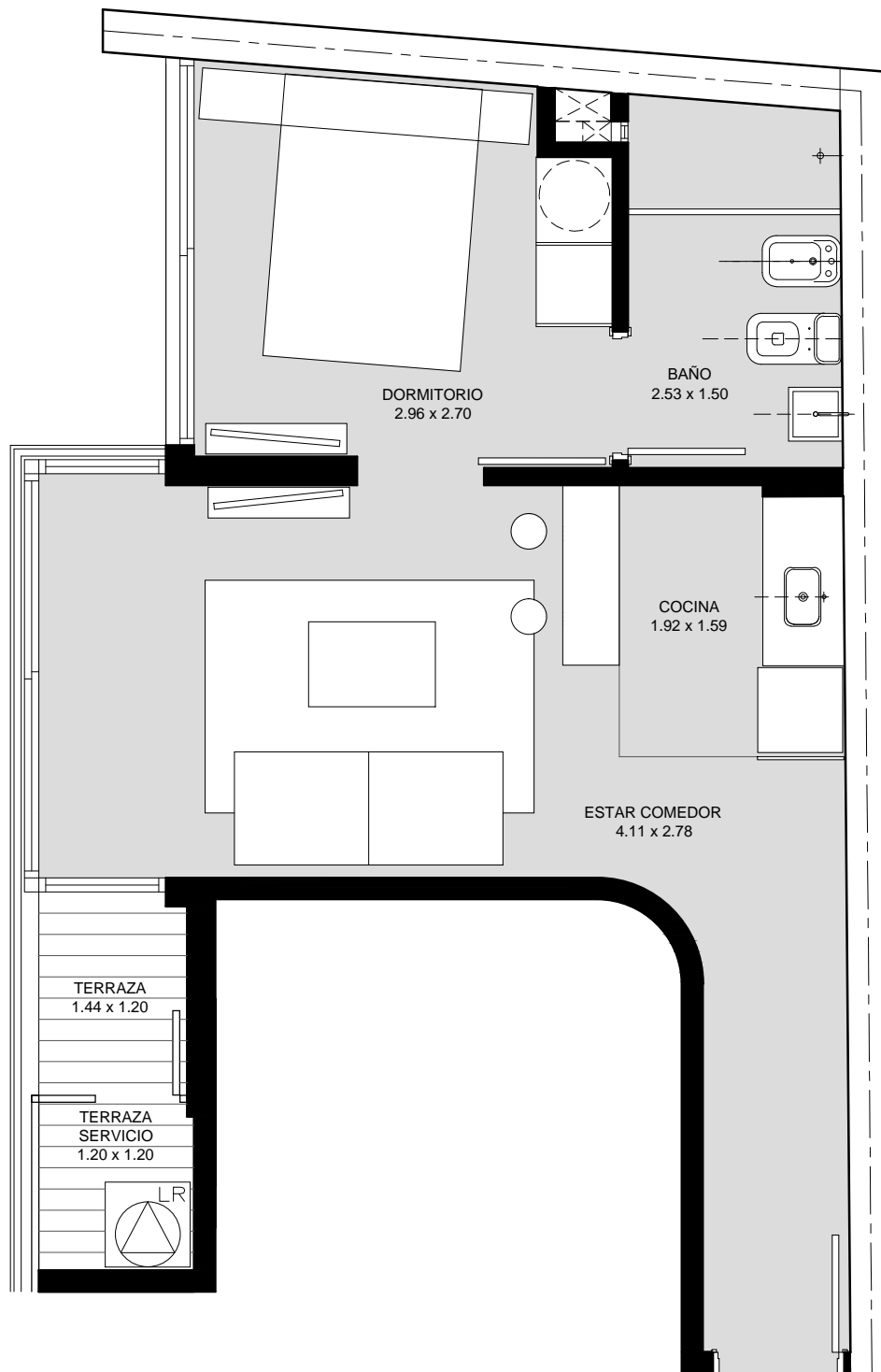
**ÁREA TOTAL 48.93 m<sup>2</sup>**



PROYECTO Y DIRECCIÓN:  
**ATIJAS - CASAL ARQUITECTOS**

PROMUEVE Y CONSTRUYE:  
**PADMY CORPORATION S.A**



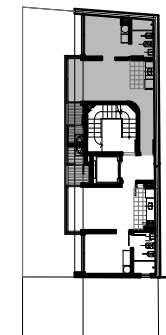
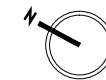


# SOLEIL PLAYA

## UNIDAD 901 1 DORMITORIO

ÁREA HABITABLE + MUROS	37.16 m <sup>2</sup>
TERRAZAS	3.95 m <sup>2</sup>
CIRCULACIONES	9.71 m <sup>2</sup>
PARRILLERO	38.78

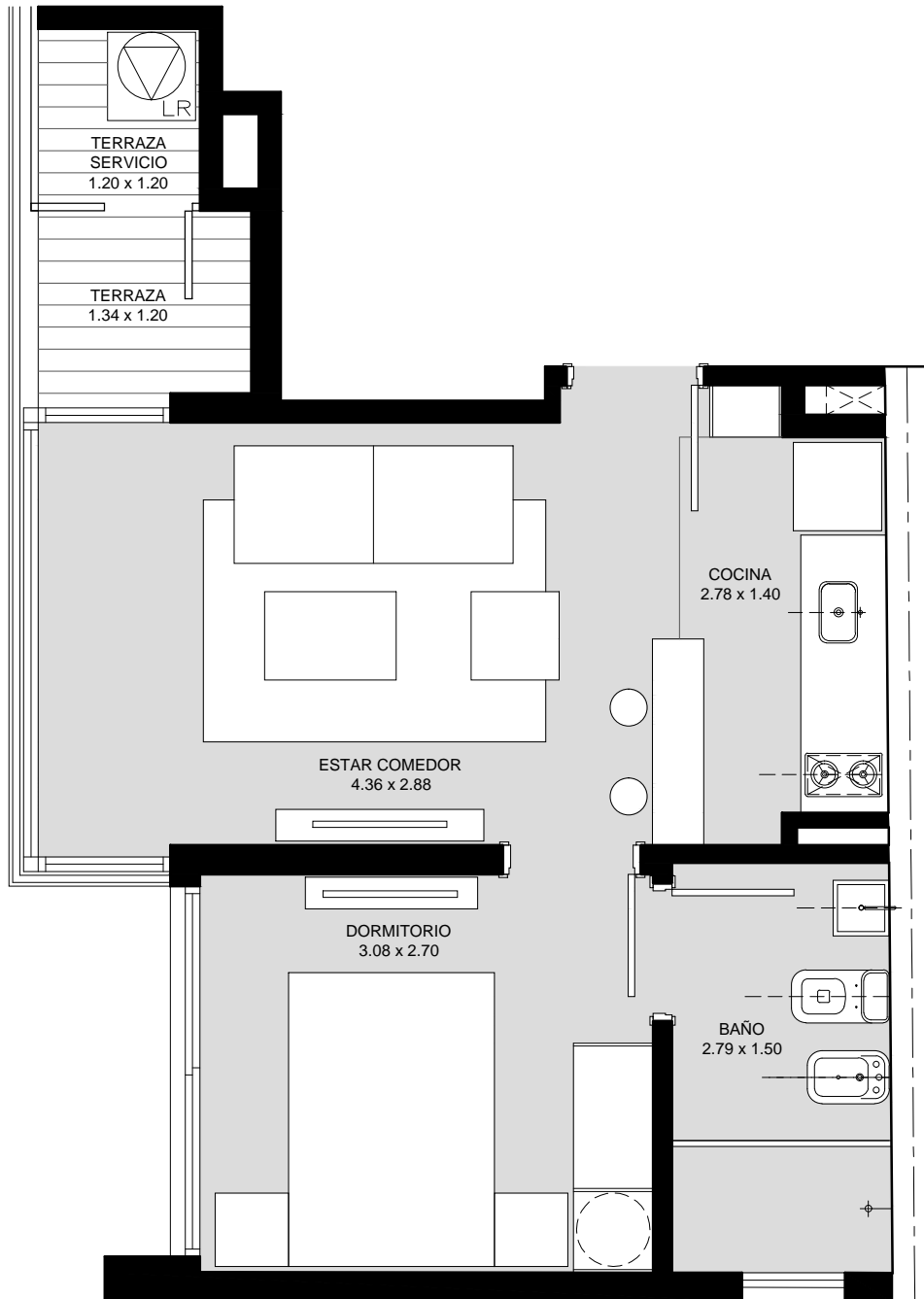
**ÁREA TOTAL 89.60 m<sup>2</sup>**



PROYECTO Y DIRECCIÓN:  
**ATIJAS - CASAL ARQUITECTOS**

PROMUEVE Y CONSTRUYE:  
**PADMY CORPORATION S.A**



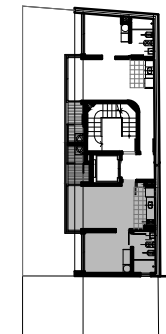
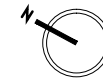


# SOLEIL PLAYA

## UNIDAD 902 1 DORMITORIO

ÁREA HABITABLE + MUROS	35.04 m <sup>2</sup>
TERRAZAS	4.54 m <sup>2</sup>
CIRCULACIONES	9.35 m <sup>2</sup>
PARRILLERO	39.17

**ÁREA TOTAL 88.10 m<sup>2</sup>**

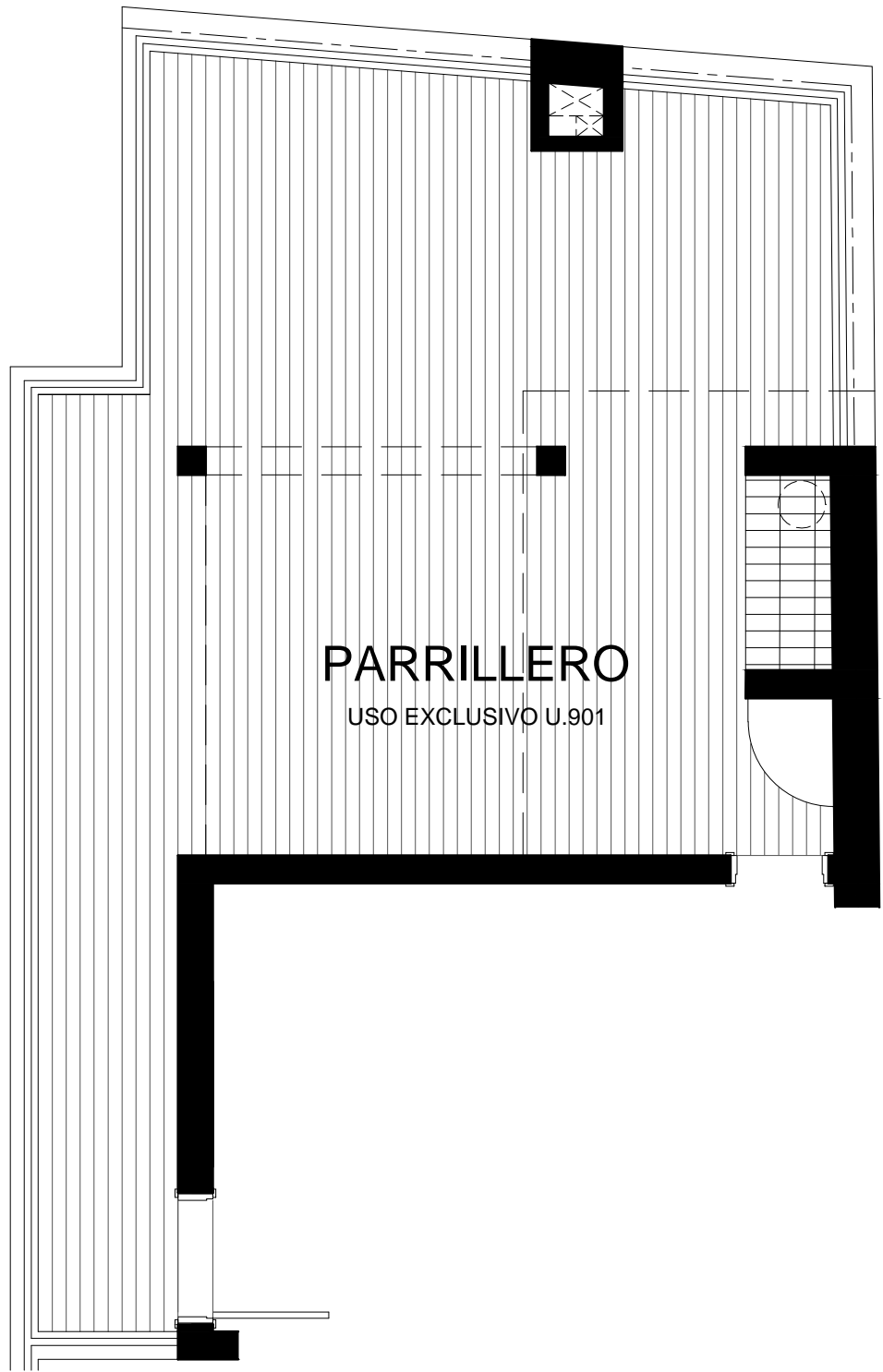


PROYECTO Y DIRECCIÓN:  
**ATIJAS - CASAL ARQUITECTOS**

PROMUEVE Y CONSTRUYE:  
**PADMY CORPORATION S.A**

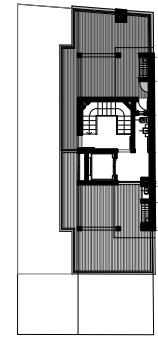
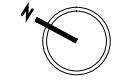






# SOLEIL PLAYA

## PARRILLERO - U.901



PROYECTO Y DIRECCIÓN:  
**ATIJAS - CASAL ARQUITECTOS**

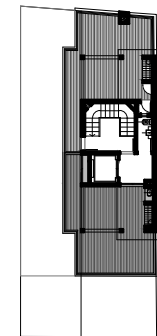
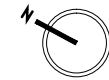
PROMUEVE Y CONSTRUYE:  
**PADMY CORPORATION S.A**





# SOLEIL PLAYA

## PARRILLERO - U.902



PROYECTO Y DIRECCIÓN:  
**ATIJAS - CASAL ARQUITECTOS**

PROMUEVE Y CONSTRUYE:  
**PADMY CORPORATION S.A**

